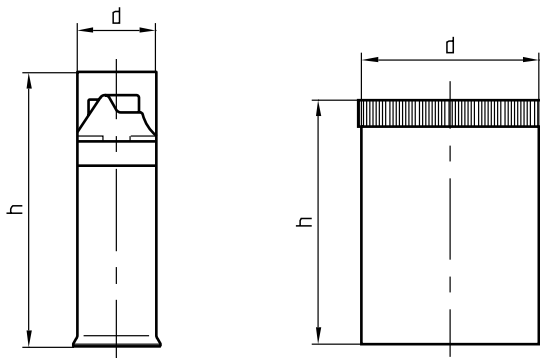


Z 260/...



Typ 1

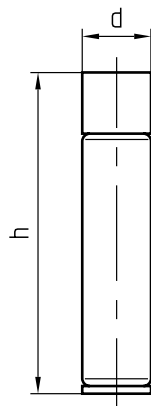
Typ 2



► Info

max. °C	d	h	Inhalt [g] Content [g] Contenu [g]	Typ	Nr./No.
180	43	163	90	-	Z 260
	55	210	180	1	Z 260/1
	110	150	1000	2	Z 260/2

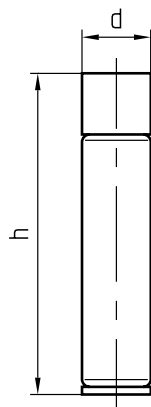
Z 261/...



► Info

max. °C	d	h	Inhalt [g] Content [g] Contenu [g]	Nr./No.
180	53	235	270	Z 261

Z 262/...



► Info

d	h	Inhalt [g] Content [g] Contenu [g]	Nr./No.
53	235	270	Z 262